

Kauni Knitting instructions no. 5

Design no. 1. Pullover with roses

Materials: Kauni effect yarn no. 8/2 (100% wool)

Size: S – (M) – L – (XL)

Amount of yarn: 440 – (520) – 600 – (680) g

Colours: all colours with Kauni effect yarn 8/2

Circle needles: no. 2 and 3

Gauge after felting:

back and sleeves: 52 stitches and 74 rows = 20 cm x 20 cm

front: 60 stitches and 64 rows = 20 cm x 20 cm

If the gauge does not match, use needles of smaller or larger size.

Back

Cast on 140 (145) 150 (155) stitches with needles no. 2 and work in stockinette stitch for 16 rows for a roll hem. Continue in stockinette stitch with needles no. 3 for 152 (156) 160 (164) rows (in addition to 16 rows of roll hem). For shaping armhole, bind off at both edges 3, 1, 2, 1, 2, 1, 2, 1 stitches.

When you have 114 (119) 124 (129) stitches on the needles, continue for 62 (66) 70 (74) rows without binding off. For shaping shoulderline, bind off at both edges 5, 5, 6, 7 (6, 6, 6, 7) 6, 6, 7, 8 (7, 7, 7, 8) stitches.

Now you have 68 (69) 70 (71) stitches on the needles. Work for 22 rows without decreasing and after that cast off all remaining stitches.

Front

Cast on 162 (168) 174 (180) stitches with needles no. 2 and work in stockinette stitch for 16 rows for a roll hem. Take needles no. 3. Work the rose pattern as shown in the drawing. In between each row of rose pattern work 4 rows of stockinette stitch.

Work for 130 (134) 138 (142) rows (in addition to roll hem) and for shaping armhole bind off at both edges 3, 1, 2, 1, 2, 1, 2, 1, 2 stitches.

When you have 132 (138) 144 (150) stitches on the needles, continue for 52 (54) 56 (58) rows without binding off. For shaping shoulderline, bind off at both edges 6, 7, 7, 7 (7, 7, 8, 8) 8, 8, 8, 9 (9, 9, 9, 9) stitches.

Now you have 78 stitches on the needles. Work for 10 rows without binding off, finish the rose pattern and work for another 8 rows in stockinette stitch. Cast off all remaining stitches.

NB! Stitches bound off for armholes and shoulderline are subtracted from the pattern's number of stitches.

Sleeves

Cast on 60 (62) 64 (66) stitches with needles no. 2 and work in stockinette stitch for 16 rows for a roll hem. Work in stockinette stitch with needles no. 3 for another 20 rows (in addition to roll hem). Increase for sleeve shaping at each end 1 stitch at every row until you have 94 (102) 110 (118) stitches.

After that increase 1 stitch at each end every 4th row (except for size XL for which increase stitches every row) until you have 112 (117) 122 (127) stitches on the needle.

Continue without increasing until the work measures 164 stitches on needles no. 3.

For shaping sleeve cap, bind off at both ends 2, 1, 2, 1, 2, 1, 2, 1 stitches and then cast off all remaining stitches.

Preparation for felting Place the right sides of the front and back on each other and sew together, leaving the roll hems open. When sewing them together, make sure that the lower seams of the front and back run next to the lowest row of roses.

Sew sleeves together, right sides inside.

Wash all finished pieces in the washing machine at 40°C. Allow to dry and steam.

Join shoulder seams and fix the roll hem (see picture). Join sleeves to the body and then join side seams, fix the roll hem (see picture).

Design no. 2. Jacket with a glass button

Materials: Kauni yarn no. 4/2 (50% wool, 25% acrylic, 25% polyester)

Size: S – (M) – L – (XL)

Amount of yarn: 460 – (540) – 620 – (700) g

Colour: all colours from the Kauni yarn selection 4/2

Circle needles: no. 6

Gauge: 14 stitches and 22 rows = 10 x 10 cm

If the gauge does not match, use needles of smaller or larger size.

Back

Cast on 82 (85) 88 (91) stitches and continue for 18 (20) 22 (24) rows according to drawing no. 1. As from the next row, bind off for waistline 1 stitch at both edges every 5th row. Continue binding off until you have 74 (77) 80 (83) stitches on the needles.

After that increase upward from the waist 1 stitch at both edges every 5th row until you have again 82 (85) 88 (91) stitches on the needles. Continue with the same number of stitches until work measures 32 (33) 34 (35) cm. For shaping armhole bind off 2, 2, 2, 1 stitches at both edges every row. Now you have 68 (71) 74 (77) stitches on the needles. Continue until work measures 55 (57) 59 (61) cm. The middle 16 (17) 18 (19) stitches cast off for neck. Then bind off 2, 3 stitches at both ends of the neck every row. At the same time bind off for shoulderline 7, 7, 7 (7, 7, 8) 7, 8, 8 (8, 8, 8) stitches every row at the other end of work.

Front

Cast on 44 (46) 48 (50) stitches and work as the back, but bind off only at one end.

Before shaping armhole you have 44 (46) 48 (50) stitches on the needles. Bind off at every row 2, 2, 2, 1 stitches until you have 37 (39) 41 (43) stitches on the needles. Continue without binding off until work measures 48 (50) 52 (54) cm and then start binding off for neck. Bind off at every row 7, 1, 1, 1, 1, 1, 1, 1, 1 (8, 1, 1, 1, 1, 1, 1, 1, 1) 9, 1, 1, 1, 1, 1, 1, 1, 1 (10, 1, 1, 1, 1, 1, 1, 1, 1) stitches, but not at the shoulder's side. Now you have 21 (22) 23 (24) stitches on the needles. Bind off at the shoulder's side 7, 7, 7 (7, 7, 8) 7, 8, 8 (8, 8, 8) stitches every row.

Work the other front in reverse.

Sleeves

Cast on 48 (50) 52 (54) stitches and work 1 row in reverse stockinette stitch. Work 2 rows in 1 x 1 rib pattern (knit

1, purl 1). Continue in stockinette stitch and at the same time bind off 1 stitch at both ends every 7th row until you have 42 (44) 46 (48) stitches on the needles. At the same time work the pattern according to drawing no. 2. Work 12 rows of pattern and 3 rows without pattern.

Now start with the second pattern from drawing no. 1 and at the same time increase 1 stitch every 8th row and make the increase 9 times.

Now you have 60 (64) 68 (72) stitches on the needles. Continue until the work measures 43 cm.

For shaping sleeve cap bind off 2, 2, 2, 1 stitches at both edges every row. Cast off all remaining stitches.

Make a decorative external seam to sleeves (see picture).

Join shoulder seams and sew sleeves in position. Join side seams. Fix a button to the jacket and make a stitch for the button.

Design no. 3.

Jacket with a wooden button and collar

Materials: Kauni wool yarn no. 8/2 (100% wool)

Size: S – (M) – L – (XL)

Amount of yarn: 400 – (460) – 520 – (580) g

Colour: all colours from the Kauni wool yarn selection 8/2

Circle needles: no. 3

Gauge after felting: 48 stitches and 72 rows = 20 x 20 cm

If the gauge does not match, use needles of smaller or larger size.

Back

Cast on 5 (9) 13 (17) stitches and work 4 row in stockinette stitch. Increase on the right side of work 5 stitches and work 1 row in reverse stockinette stitch. At the end of the row increase another 5 stitches. Work 3 rows in stockinette stitch. Continue to work according to the zigzag pattern.

Start with pattern on the 9th row (from where you start the zigzag for the 3rd time). Work 12 stitches in stockinette stitch, 1 yarn-over, lift 1 over without working, knit 1 and lift the unworked stitch (see the pattern drawing). Continue in stockinette stitch until the end of the row and increase another 5 stitches. In between pattern rows work 4 rows of stockinette stitch.

The width of the pattern is 5 motifs.

Both sides of the pattern work in stockinette stitch.

See the picture.

Continue with zigzags according to the pattern. All in all, you will make 25 zigzags. By now the jacket has achieved its width and you have 127 (131) 135 (139) stitches on the needles.

Work 35 (36) 37 (38) cm without increasing and binding off: follow the pattern and work the sides of pattern in stockinette stitch.

For shaping armhole bind off at both sides 2, 2, 2, 2, 2, 2 stitches every row. Now you have 103 (107) 111 (115) stitches on the needles. Work 22 (23) 24 (25) cm without increasing and binding off.

Cast off the middle 35 stitches for neck. 27 (29) 31 (33) stitches are left at both sides for shoulders. Bind off for shoulderline 9, 9, 9 (9, 10, 10) 10, 10, 11 (11, 11, 11) stitches and at the same time bind off for shaping the neck 3, 3, 1 stitches at both shoulders.

Left front

Cast on 7 (9) 11 (13) stitches and work 3 row in stockinette stitch. Increase 5 stitches for the next zigzag. In between every zigzag work 3 rows. Work zigzag in stockinette stitch. On the row of the 11th zigzag start with the pattern: knit 40 stitches and start with the pattern motif. See the pattern drawing. The pattern motif forms a lovely hem the width of which is 3 motifs. Continue with zigzags, following the pattern and working all remaining stitches in stockinette stitch. All in all, you should work 14 zigzags. The width of the last zigzag is 7 stitches. Now you have 74 (76) 78 (80) stitches on the needles and the jacket's front has achieved its width.

Work 18 (19) 20 (21) rows without increasing or binding off, following the pattern.

Armholes and neck are bound off at the same time. At armhole's side bind off 2, 2, 2, 2, 2, 2 stitches and work 22 (23) 24 (25) cm without binding off. At neck's side bind off 1 stitch every row over 22 cm.

Binding off at shoulder: 9, 9, 9 (9, 10, 10) 10, 10, 11 (11, 11, 11) stitches. Now cast off all remaining stitches.

Right front: work in reverse to the left front.

Sleeves

Cast on 7 (9) 11 (13) stitches and work 4 rows in stockinette stitch. Increase on the right side of work 5 stitches and work 1 row in reverse stockinette stitch. At the end of the row increase another 5 stitches. Work 3 rows in stockinette stitch. Continue to work according to the zigzag pattern.

Start with the pattern at the place of the 4th zigzag: work 25 stitches in stockinette stitch (including the stitches just increased for the zigzag pattern), 1 yarn-over, lift 1 over without working, knit 1 and lift the unworked stitch (see the pattern drawing). Continue in stockinette stitch until the end of the row and increase another 5 stitches. Continue, following the drawing. The first pattern motif forms a lovely hem over the entire width of the pattern. Continue with zigzags, following the pattern and working the back part of the sleeve in stockinette stitch. After having worked 11 zigzags, you have 57 (59) 61 (63) stitches on the needle. Start with increasing. Increase 1 stitch at both edges every 5th row until you have 105 (109) 113 (117) stitches on the needle. Work without increasing until you have 17 pattern rows. For shaping sleeve cap bind off at both sides 2, 2, 2, 2, 2, 2 stitches at the start of every row. All remaining stitches cast off once.

Left side of collar

Cast on 25 stitches and work 1 row in reverse stockinette stitch. The collar's outer edge is increased and the middle part is bound off at the same time.

Collar's outer edge: knit 2 stitches and at the 3rd stitch knit 1 through back of loop.

Increase 1 stitch at the start of every row.

Collar's middle part: bind off 1 stitch at the start of every reverse row. Start with pattern on the 7th row. Knit 2 stitches, increase 1 stitch at the 3rd stitch, knit 5 stitches and start with the pattern motif.

The width of the pattern is 2 motifs. On the 7th row increase and bind off at the same time. Work 4 rows in stockinette stitch and continue increasing, but don't decrease the middle part. By now you have reached the collar's upper edge. See the picture.

Collar's outer edge: work the next row without increasing.

Knit 12 stitches and start with the only pattern motif on this row. See the pattern drawing.

Start with increasing the collar for neck at the start of every reverse row: Increase 4, 3, 1 stitches at the collar's inner edge.

At the same time work the collar's outer edge over the entire height of the pattern motif.

After that increase the collar's inner edge and decrease the collar's outer edge at the same time, following the pattern motif according to the drawing.

Collar's outer edge: bind off 1 stitch every 3rd row 2 times. After that decrease 1 stitch at the start of every 7th row 2 times. After that decrease 1 stitch every row 9 times. Work 2 rows, without changing the number of rows.

Collar's inner edge: cast on 22 stitches and work 3 rows according to the pattern and 4 rows in stockinette stitch.

For final decreasing work every 3rd stitch with the next one and cast off.

Work the collar's right edge in reverse.

Preparation for felting Place the front pieces together, right sides on each other and seam together. Fold the back together from the middle, right side inside and seam together. Place sleeves together, right sides on each other and seam together. Place sleeves together, right sides on each other and seam together.

Wash all pieces in the washing machine at 40°C. Allow to dry and steam.

Make an outer decorative seam on the sleeves, the front pieces and the back (see the picture). Join shoulder seams. Make the front hems stronger with a 1 cm wide seam. Join the collar's right and left piece. Attach the collar to the jacket. Sew sleeves in position. Join side seams, fix the button and make a buttonhole.

Design no. 4. Crocheted poncho

Materials: Kauni yarn no. 8/2 100% wool

NB! Crochet with double yarn.

Size: one size

Amount of yarn: 300 g of light and 400 g of dark yarn

Colours: JJ1 – pink JJ2 – deep pink
AA – white NN – beige
SS – light blue DD – dark blue
HH – light grey HH – dark grey
UU – light green RR3 – dark green

Crochet hook: no. 3.5

1. motif

Crochet 8 chains with the darkest colour (J2). Use crocheting hook no. 3.5. See the picture. Join the chains into a circle and continue according to pattern drawing 1. On the 3rd change the yarn for the lighter one (J1). On the 4th row change the yarn for the darker one (J2). On the 5th row change the yarn for the lighter one again (J1). Make 26 motifs.

2. motif

Crochet 8 chains with the darkest colour (J2). Use the crocheting hook no. 3.5. See the picture. Join the chains into a circle and continue according to pattern drawing 2. On the 3rd change the yarn for the lighter one (J1). On the

4th row change the yarn for the darker one (J2). On the 5th row change the yarn for the lighter one again (J1). Make 4 motifs.

Collar

Make 40 chains with the darkest colour (J2). Use the crocheting hook no. 3.5

1. row: make 2 chains to be the same height as the row. Make a half double crochet into every chain.

2. row: make 2 chains to be the same height as the row. Make a half double crochet into the back loop of the below half double crochet.

3. row: make 2 chains to be the same height as the row. Make a half double crochet onto the below half double crochet.

4. row: as the 2nd row.

Join the motifs as shown in the picture.

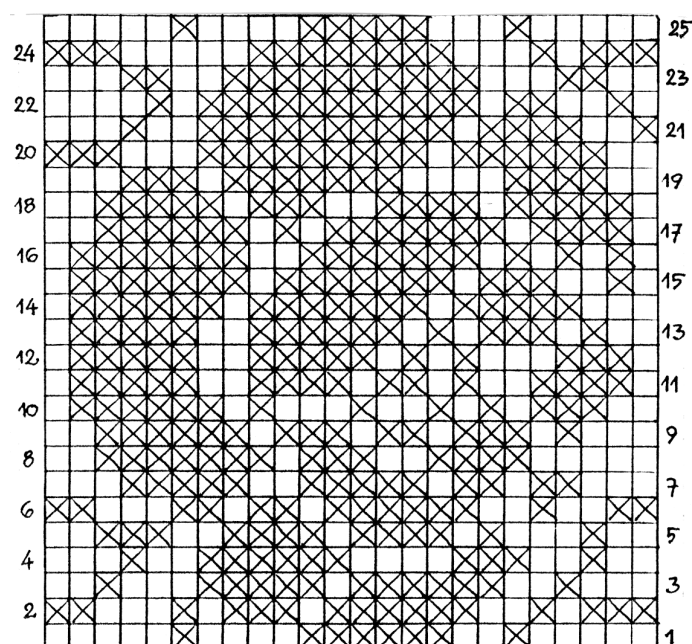
NB! On the front and back side there are 2 small motifs. See the picture.

Join the collar to the body on the reverse side. Jags of the front should be visible. See the picture.

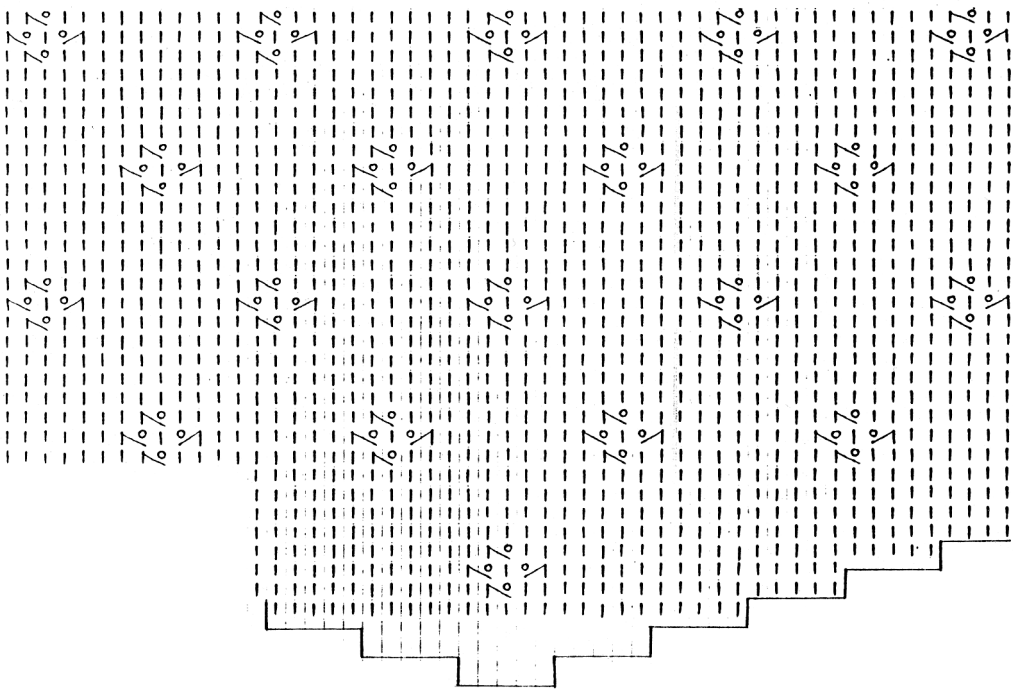
ABBREVIATIONS

- | on the right-side row knit and on the wrong-side row purl
- on the right-side row purl and on the wrong-side row knit
- o yarn over
- ↗ knit 2 together
- ↘ pass 1, knit 1, pass the slipped stitch over
- † double crochet
- ‡ treble crochet
- chain
- ∨ single crochet
- | half double crochet
- ⌘ 3 treble crochets together

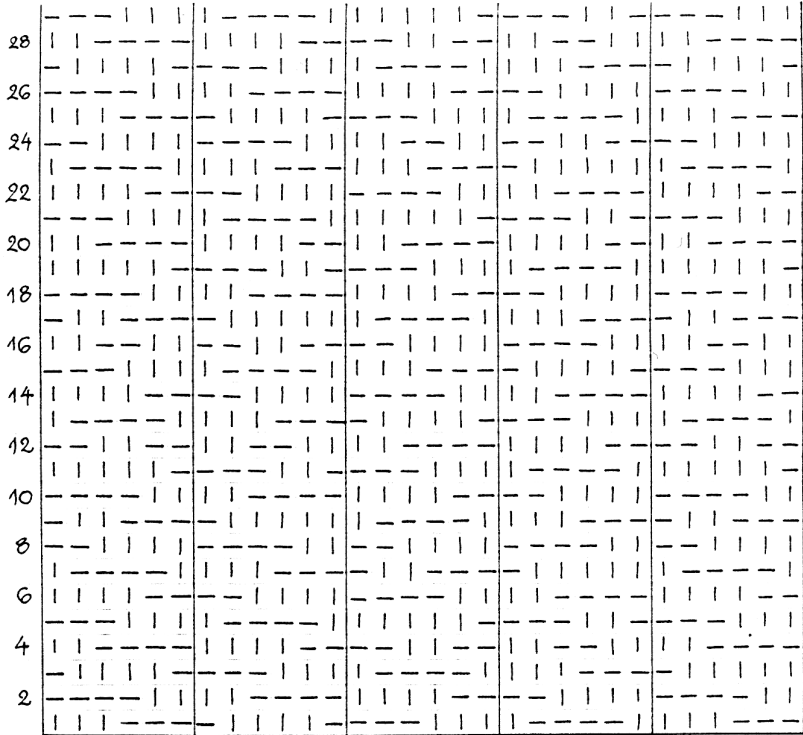
DESIGN nr 1



DESIGN NR. 3



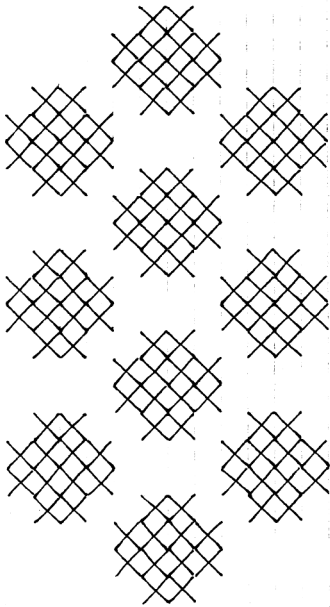
DESIGN NR. 2
Drawing nr 1



28
26
24
22
20
18
16
14
12
10
8
6
4
2

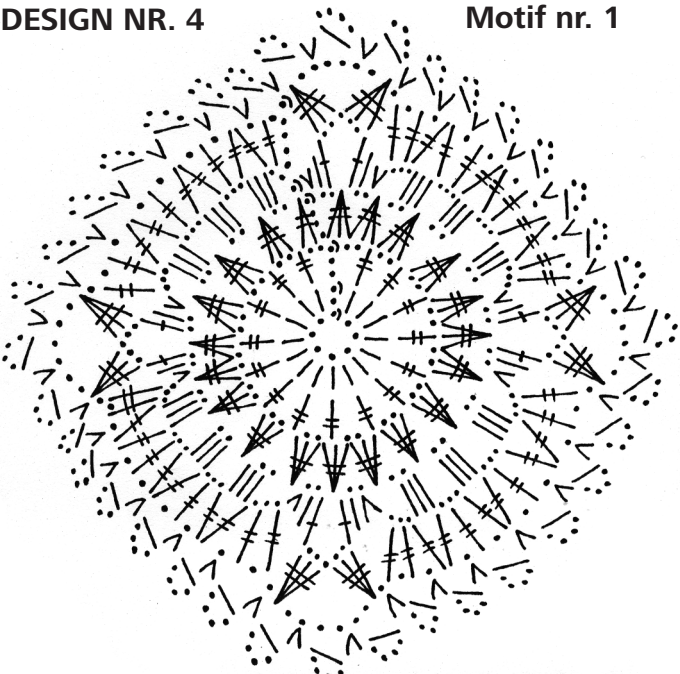
29
27
25
23
21
19
17
15
13
11
9
7
5
3
1

DESIGN NR. 2
Drawing 2



DESIGN NR. 4

Motif nr. 1



DESIGN NR. 4

Motif nr. 2

