

Knitted garments no 13

Model no.1 CARDIGAN with Rose Pattern

Size: S(M)L(XL)

Materials: Kauni effect yarn no. 8/2 (100% pure wool)
750 g's in total

Colour recommendations: EQ/EQ, EC/EC or all other colours of Kauni effect yarns.

Needles: Pointed and circular needles size 3mm, 60 cm long or the size needed to obtain a knitting tension of:
24 sts x28 rows in stocking sts =10x10cm before felting.
27 sts x32 rows in stocking sts =10x10cm after felting.
Pointed and circular needle size 1.5 mm for the rolling edges. All pieces will be larger than normal as they are felted before assembled.

Please note: Washing machines are different and therefore we cannot guarantee the size of the pieces after they have been felted.

Front and back piece are worked on circular needles as one big piece until the armholes.

Work in rounds on circular needle size 1.5 mm: Cast on 276+2(282+2)288 +2 (294+2)sts and work 4 rounds in stocking sts. At the beginning and end of each pattern round work 1 sts in plain stocking sts (no pattern). This will later be used to cut up for the front band zipper. Work 6 rounds in stocking sts and then work the 7th row as follows: K 2 sts tog, make a yo, K 2 sts tog, make a yo. Repeat this pattern until end of round. Purl one round and work the following 6 rounds in stocking sts. Fold the edge back making the bend in the 7th round (the round with the yo's) and K tog 1 st with a st from the edge. Now change to needle size 3 mm and continue to work in rounds according to pattern *diagram* for 10(11)12(13) cm. Then dec. for the waist as follows: K 2 sts tog at the side lines for both sides (see *drawing* and see *photo*) on every 2nd cm a total of 14 times. The work now measures 39(40)41(42)cm. Work another 3 cm straight without any dec. or inc. Continue to inc. 2 sts each side lines every 2nd cm for a total of 7 times. Work another 2 cm in pattern and then begin to cast off for the armholes. Continue to work with circular needles (or pointed needles if preferred) size 3 mm back and forth.

Front piece: Cast off for the armholes from the front side of the work on every other row as follows: 6,2,2,2, 2, 1,1,1,1,1,1, 1,1,1,1,1 sts (a total of 24 sts) each side. Continue to work straight up according to the pattern *diagram* for another 11 (12)13(14)cm measured from the beginning of the armhole. Then cast off for the neckline from the front side of the work on every other row for (13,3,2,1,1,1) sts counted from the middle (the middle is the 2 sts with no pattern). Continue straight up until each

side measures a total of 21(22)23(24) cm measured from the beginning of the armhole. Cast off 7,7(8,8)9,9(10,10) sts for the shoulder and then cast off remaining sts.

Back piece: Cast off for armholes as done for the front piece on every other row a total of 24 sts each side. Continue to work according to *diagram* until piece measures 17(18)19 (20)cm from the beginning of the armhole. Cast off for the neck line from the front, each side on every other row a total of (16,2,2)sts counted from the middle. Continue to work straight up until each side measures 21(22)23(24)cm from the beginning of the armhole. Cast off 7,7(8,8)9,9(10,10) sts for the shoulder and then finally cast off the remaining sts. **Sleeves:**

Cast on 58(60)62(64)sts with pointed needles size 1.5 mm and work 6 rows in stocking sts. Work the 7th row as follows: K 2 tog make a yo, K 2 tog make a yo and repeat this pattern until end of row. Purl the next row and then work 6 rows in stocking sts. Fold the edge back making the bend on the 7th row (the row with the yo's) and K tog 1 st with a st from the edge. Change to pointed needle size 3 mm and work 5 rows straight up according to *diagram*. Continue as follows: inc. 1 sts each side on every 9(8)7(6)th row. After 1 pattern repeat of roses continue in stocking sts without pattern and continue to inc. Work until the sleeve measures 44(45) 46(47)cm and then cast off for the sleeve cap each side for 9,3,2,2,2,2,1,1,1,1, 1,1,1,1,1,2,2,3,3 sts. Cast off remaining sts. Make another sleeve the same.

The collar: With needle size 1.5 mm pick up 108 sts around the neck opening and work 5 cm in stocking sts. Then continue for 2 cm in zikzak pattern according to *diagram 2*. Work 6 rows in stocking sts and then cast off all sts. Measure the length of the front piece from the zip side and make a back piece and an edge piece for the zipper.

Zip edge piece: Cast on 6 sts on pointed needles size 3 mm and work in stocking sts to the length you wish. Make 2 pcs.

Zip back piece: Cast on 4 sts on pointed needles size 3 mm and work in stocking sts to the length you wish. Make 2 pieces.

Assembly: Put the pieces together front to front and tag with loose sts along the edge, see photo. Wash at 40 deg. dry and undo the stitches. Iron the pieces from the left side and cut up the pattern piece along the middle one non pattern stripe (1st and last non patterned st on each round). Sew the cut edge with the zig zag sts and fold it nicely back. Sew the flag to the backside of the collar and join in the sleeves. Insert the zipper and join the zippers edge/back side pieces to the WS of the cardigan.

Model no. 2 HAT with Flower pattern.

Materials: Kauni effect yarn no. 8/2 (100% pure wool) and Kauni plain colour yarn 8/2 (100% pure wool) approx. 100g in total.

Size: Female

Colour recommendations: EB/PP2 ; ET/HH1 ; EKS/DD1, see other colour recommendations in Knitting Models 'colour version' Kauni catalog 13.

Lining: A piece of soft material measures 6 cm wide and about 60 cm long.

Needles: For the Rolling edge use double pointed needles size 2mm and for the hat use double pointed needles size 3mm or the size needed to obtain a knitting tension of:

24 sts x 28 rows in stocking sts = 10x10cm before felting.

27 sts x 32 rows in stocking sts = 10x10 cm after felting.

All pieces will be larger than normal as they are felted before assembled.

Please note: Washing machines are different and therefore we cannot guarantee the size of the pieces after they have been felted.

Cast on 144 sts on double pointed needles size 2 mm and part the sts evenly onto 4 needles = 36 sts on each needle. Make a ring and work 12 rounds in stocking sts with the plain colour yarn for a rolling edge. Change to needles size 3 mm and effect yarn and continue in stocking sts according to *diagram* for 7.5 cm. Leave sts and pull a plain colour thread through them. Complete the work at a later stage.

Assembly: Fold the hat - right side towards right side and tag with loose sts along the straight edge. Wash at 40 deg. dry and undo the stitches. Iron the pieces from the WS and join the lining inside the hat so it does not itch at the forehead. Pull the open sts at the top of the hat together with the plain coloured thread and pin it on the inside of the hat, see photo. Make the lace and join it to the top of the hat.

Model nr. 3 SCARF

Materials: Kauni effect yarn no. 8/2 (100% pure wool)

Size: One size **Yarn Needed:** 145 g **Colour recommendations:** All 8/2 effect yarns from Kauni.

Needles: Circular needles size 5 mm or the size needed to obtain a knitting tension of:

17 sts x 24 rows in stocking sts = 10 x 10 cm.

Finish measures: 45 x 200 cm

Starting edge: Cast on 71 sts with effect yarn 8/2 on circular needles size 5 mm . Work according to *diagram* 1. On the 3rd row begin the pattern with 3 small triangles, (row 3 to 7) 9 triangles in total. On the last triangle K 3 sts tog, inc. 2 sts as follows: work 2 sts in 1 sts and K

last sts according to *diagram*. Continue to work 16 rows according to *diagram* 1. On the last row inc. 1 sts = 72 sts in total.

Please note! At this point the edge band each side of the scarf begins, see *diagram* 2. Continue to work according to *diagram* 3.

The diagram is read from right to left as you work the sts on the needle. The diagram shows how the RS of the scarf is worked. Purl all sts from the WS without any inc. or dec. except for the 5 edge sts each side as they are always worked in garter sts. See *diagram* 2.

The width of the scarf is 6 pattern repeats plus the edge bands. The length of the scarf is 9 pattern repeats plus the edge pattern at both sides. (*diagram* 1). Work 9 pattern repeats according to *diagram* 3 and then work 2 rows according to *diagram* 1 (dark background). At this point the 5 sts each side for the edge band finish as for the beginning of the scarf. Finish the scarf according to *diagram* 1, but reversed. On the last row of the diagram as follows: K 2 tog. Pull the sts back on the left hand needle, K 2 tog and continue this way until all sts have been casted off.

Wash the scarf with wool shampoo or wool soap. Block the scarf to measures 45 x 200 cm on a flannel or a mattress.

Model no. 4 SHAWL with Flowers and Stripes.

Materials: Kauni effect yarn no. 8/2 (100% pure wool) and Kauni plain colour yarn 8/2 (100% pure wool).

Size: One size **Finish measures:** 95 cm x 190 cm

Yarn Needed: 360 g of Kauni effect yarn and 360 g of Kauni plain colour yarn.

Colour recommendations: EC/AA, EU/MM, EME/MM1. See other colour recommendations in Knitting Models 'colour version' Kauni catalog 13.

Needles: Circular needles size 3 mm 60 cm long (or pointed needles size 3mm if you prefer) or the size needed to obtain a knitting tension of:
24 sts x 28 rows in stocking sts = 10 x 10 cm before felting.
27 sts x 32 rows in stocking sts = 10 x 10 cm after felting.

All pieces will be larger than normal as they are felted before assembled.

Please note: Washing machines are different and therefore we cannot guarantee the size of the pieces after they have been felted.

Squares: The shawl is made of 2 squares, later cut in half according to *drawing*, see *photo*.

Squares with flower pattern – can be worked on circular needle or back and forth on pointed needles:

Working in rounds on circular needles size 3mm:

Cast on 180 sts and work 2 rounds in stocking sts with plain colour yarn. The width of the piece = 3 pattern repeats. See *diagram 1*. Then continue to work in rounds in pattern. At the beg. and end of each round work 1 sts with plain colour yarn for later to cut the piece open. The length of the work is 3 pattern repeats a total of 300 rows. Finish the work with making 2 rounds in plain colour yarn and cast off all sts. **Working with pointed needles size 3 mm, back and forth:** Cast on 180 sts and work 2 rows in stocking sts with plain colour yarn, the width of the work is made of 3 pattern repeats. Se *diagram 1*. Then continue to work in pattern. The length of the work is 3 pattern repeats a total of 300 rows. Finish the work with making 2 rows of stocking sts in plain colour yarn and cast off all sts.

Squares with stripe pattern – can be worked on circular needle or back and forth on pointed needles:

Working in rounds on circular needles size 3 mm:

Cast on 180 sts and work 2 rounds in stocking sts with plain colour yarn. Continue to work in stripe pattern according to *diagram 2*. At the beg. and end of each round work 1 sts with plain colour yarn for later to cut the piece open for assembly. The length of the work is a total of 300 rows. Finish the work with making 2 rounds in plain colour yarn and cast off all sts.

Working with pointed needles size 3 mm, back and

forth: Cast on 180 sts and work 2 rows in stocking sts with plain colour yarn. Continue to work in stripe pattern according to *diagram 2*. The length of the work is a total of 300 rows. Finish the work with making 2 rows of stocking sts in plain colour yarn and cast off all sts.

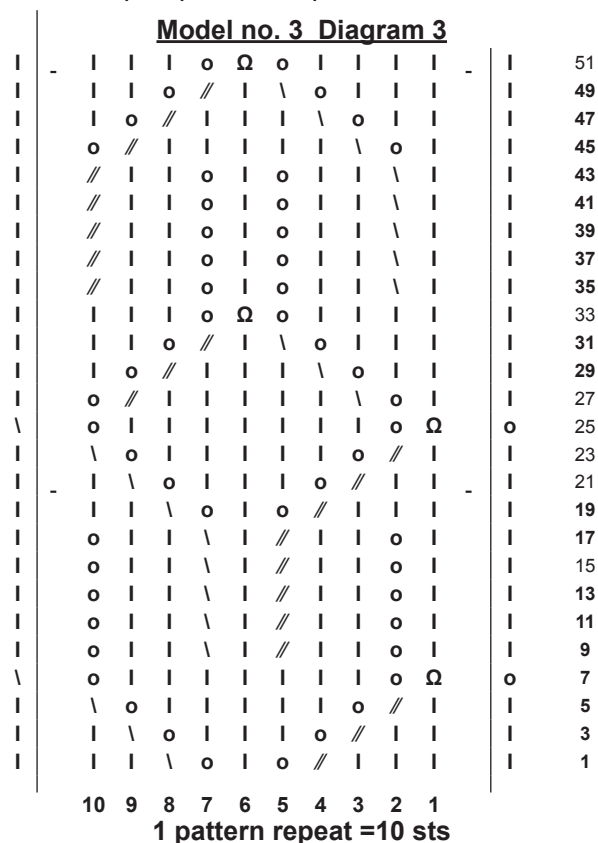
Preparing for felting. Tag with loose sts the pattern piece tog. along the open edges with the WS inside out. Tag with loose sts along the stripe piece tog along the open edges with the WS inside out. Wash the pieces at 40 deg. Dry and undo the stitches. Iron the pieces from the WS.

Assembly. Pattern piece: Cut the piece up along the plain colour stripe (1st and last sts on each round). You can if you wish sew the edges with zigzag sts on a machine and fold nicely back. Cut the piece diagonal according to drawing and sew the edges with zigzag sts on a machine if you wish. **Stripe piece:** Cut the piece up along the plain colour stripe (1st and last sts on each round). You can if you wish sew the edges with zigzag sts on a machine and fold nicely back. Cut the piece diagonal according to drawing and sew the edges with zigzag sts on a machine if you wish. Join the pieces to a big shawl according to the drawing.

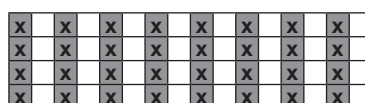
The edges: At the top (=longest edge): Cast on 2 sts with needles size 3 mm and work 2 rows in stocking sts,

inc. 1 sts each side on every other row until 6 sts in total. Work until piece measures approx. 190 cm or as long as the top edge of the shawl. Cast off 1 sts each side of the edge piece on every other row until 2 sts left. Cast off.

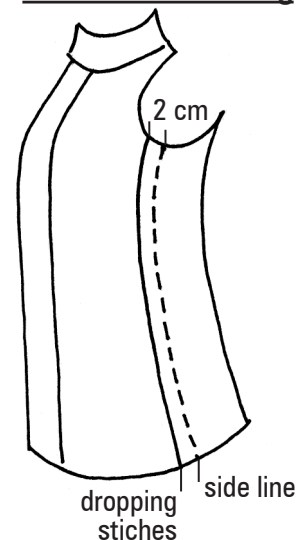
The short edges: Cast on 2 sts with needles size 3 mm and work 2 rows in stocking sts, inc. 1 sts each side on every other row until 6 sts in total. Work until piece measures approx. 135 cm or as long as the short edge of the shawl. Cast off 1 sts each side of the edge piece on every other row until 2 sts left. Cast off. Make another edge piece the same. Join the edges one by one and make the pompoms and pin them to the shawl.



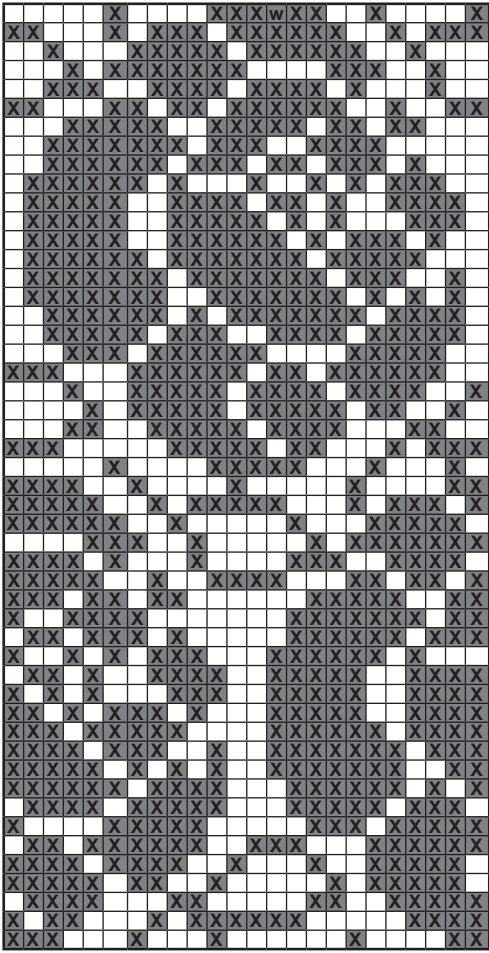
Model no. 4 Diagram



Model no. 4 drawing



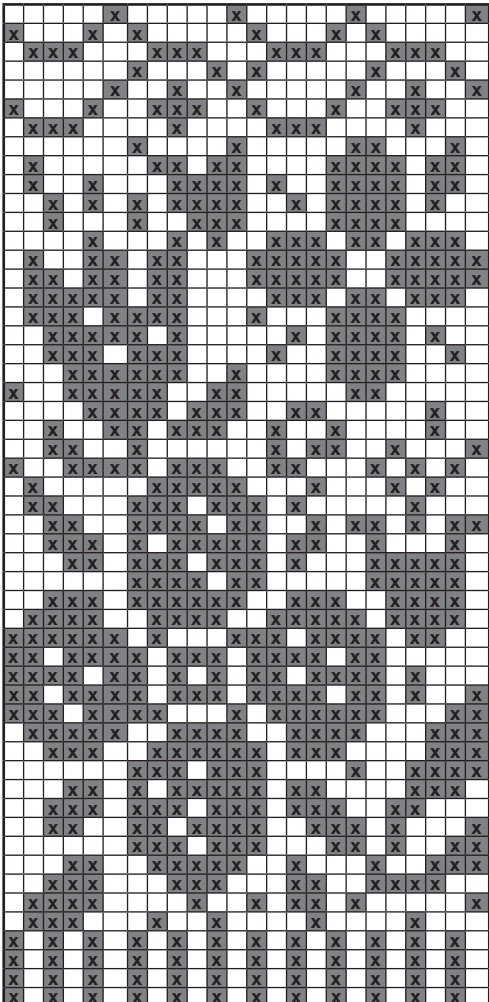
Model 1 diagram 1



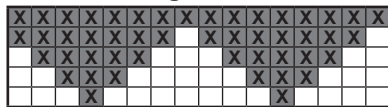
Model 4 diagram 1



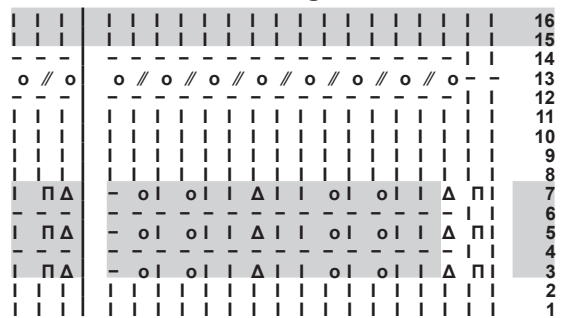
Model 2 Diagram



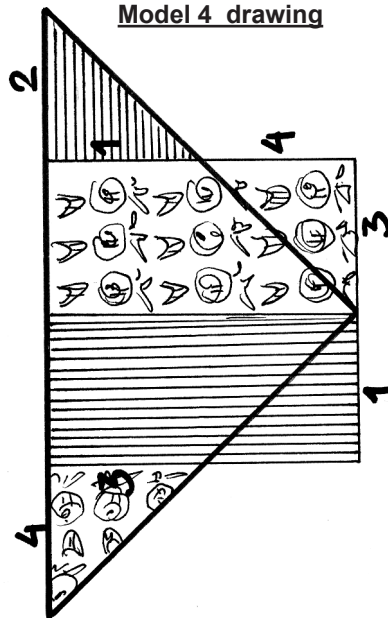
Model 1 diagram 2



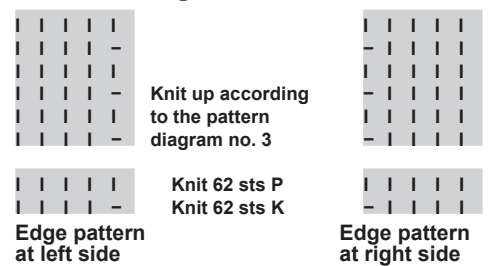
Model 3 diagram 1



Model 4 drawing



Model 3 diagram 2



- ⌋ K
- P
- o make a yo
- ⌋ K 2 tog
- Δ P 3 tog
- Π work 2 sts in 1 st
- ∖ slip a st as if to K, K1, pssso
- Ω slip 1 st as if to K, K2 tog, pssso